



## Overhangs

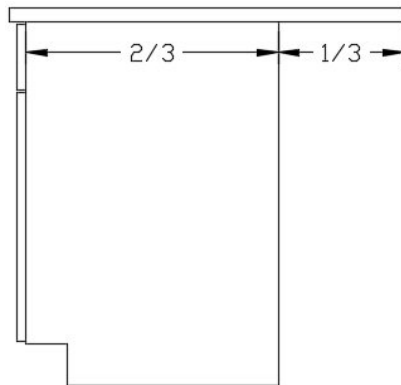
### Golden Rule is 2/3 on 1/3 off

Connecticut Solid Surface does sell metal brackets for overhangs but we do not install them. The installation should be done by your cabinet installer / carpenter. If you want these brackets please make sure you request them before the template is done so we can have our templator bring them out with him to the job site or you are welcome to come and pick them up.

Industry standards for 3cm material with overhangs are:

- 10" for Granite. Fragile stones may require corbelled support for less than 10"
- 14" for Quartz

The maximum overhang of any countertop including that with corbels is no more than 1/3 of the depth of the countertop. Larger overhangs will require additional support, including corbels or legs.



Any overhang that exceeds 14" for Quartz and 10" for Granite requires the use of corbels. Corbels must be mounted to studs or equivalent load bearing structure. Corbels must be installed so that they extend out a minimum of 3/4 of the overhang distance and must be installed evenly spaced at a minimum of every 36".

